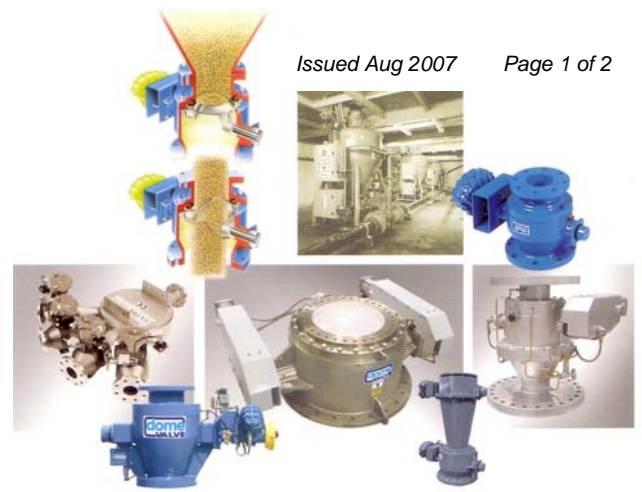




Data Sheet For: Dump Valve



Dump Valve



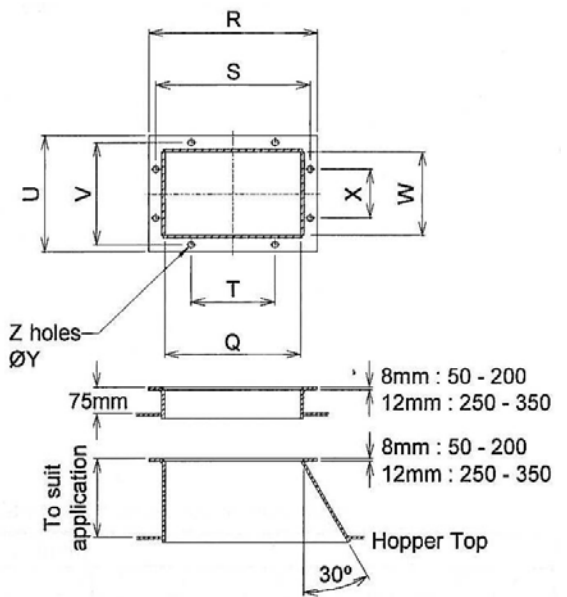
The Dump Valve enables a number of hoppers to be fed in series without the need of additional bends and their subsequent installation/maintenance issues. It has two operating conditions 'dump' to silo and 'straight through' to further silos.

One valve is installed at each delivery point in the line, except the last, which requires a Terminal Box. Each delivery point will therefore be fed or by-passed in accordance with the demands of the automatic control system.

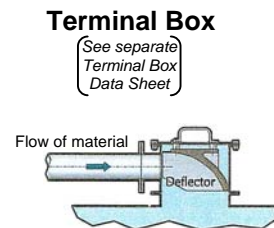
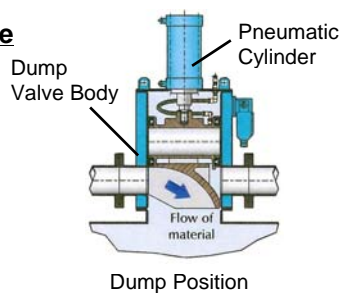
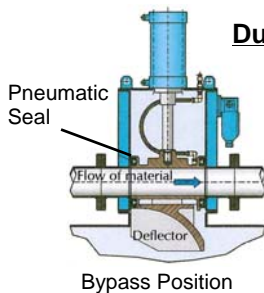
The Dump Valve is actuated by a standard heavy duty air cylinder. When in the 'straight through' condition the conveying pipeline is sealed by a self-inflating, easily replaceable seal. This maintains the dust free characteristics of the system during the delivery cycle. System extension or re-arrangement is simplified by the complete interchangeability of Dump Valves and Terminal Boxes. Materials of construction vary to suite applications.

Mounting Flange Details

Fabricated Mounting Flanges are used to secure Dump Valves and Terminal Boxes to intermediate/termination points and are available in a number of sizes.



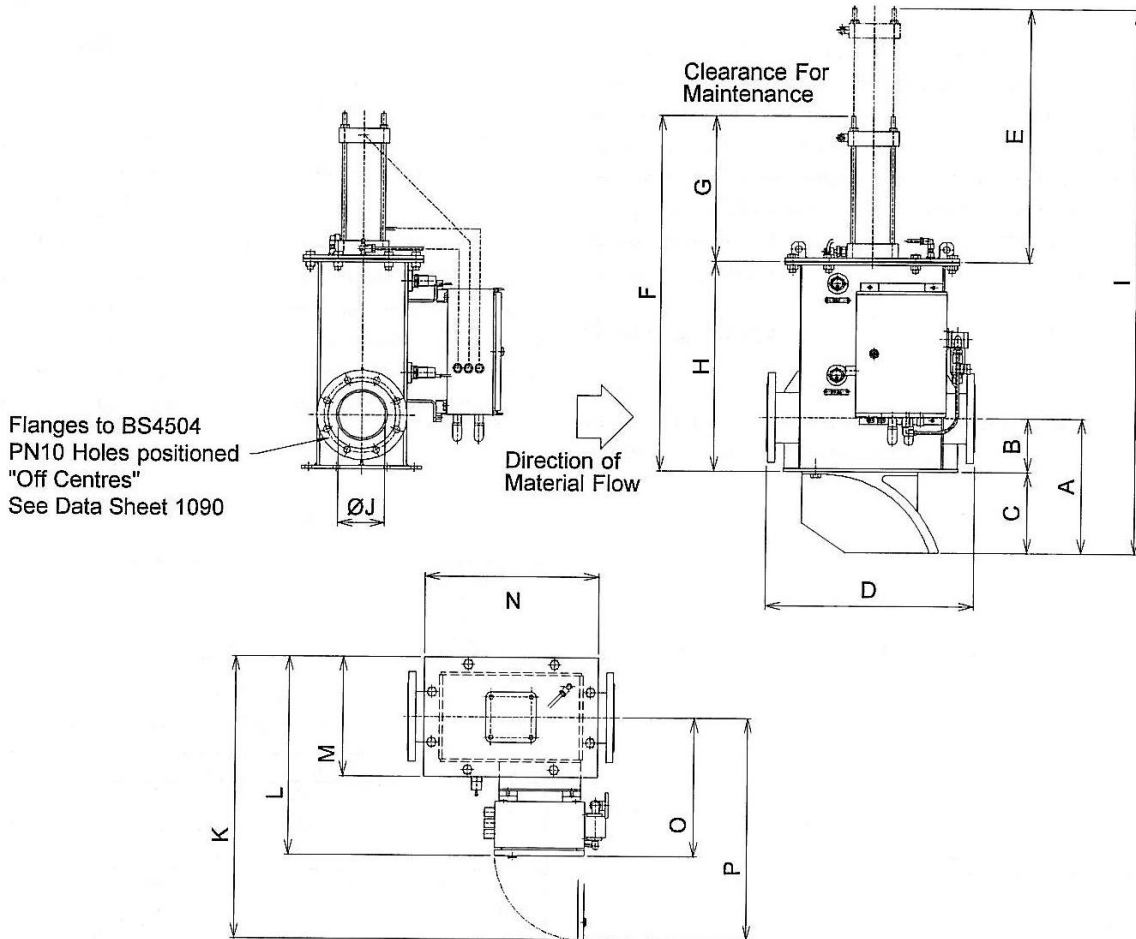
Dimensions – (mm)										
Size	Q	R	S	T	U	V	W	X	ØY	Z
50	230	310	280	160	230	200	150	120	18	8
80	288	370	340	170	290	260	208	130	18	8
100	288	370	340	170	290	260	208	130	18	8
125	390	483	442	240	333	293	240	140	18	8
150	558	710	670	320	440	400	308	230	18	8
175	558	710	670	320	440	400	308	230	18	8
200	608	770	720	360	490	440	328	250	18	8
250	780	934	870	435	604	540	440	180	22	14
300	780	960	876	438	680	596	500	200	22	14
350	910	1100	1030	206	750	680	550	170	22	18



www.originaldomevalve.com



Data Sheet For:
Dump Valve



* Remote mounted panel on 50mm conveying line. See front page for flange mountings.

Dimensions – (mm)																	
Size	A	B	C	D	E	F	G	H	I	ØJ	K	L	M	N	O	P	KG
50	242	100	142	370	820	658	283	375	800	51.8	*	*	230	310	*	*	55
80	270	123	147	450	890	735	309	426	882	79.8	698	463	290	370	318	552	83
100	259	110	149	450	960	804	347	457	953	102.3	697	463	290	370	318	552	95
125	375	150	225	575	1230	990	406	584	1215	129.8	757.5	523.5	333	483	357	591	145
150	432	210	222	800	1390	1165	419	716	1387	154.1	846	612	440	710	392	626	220
175	490	220	270	800	1615	1341	541	800	1611	181.1	846	612	440	710	392	626	325
200	515	230	285	850	1675	1384	504	880	1669	202.9	880	645	490	770	400	635	425
250	645	290	355	1270	1995	1636	598	1038	1991	254.5	1085	795	600	934	495	785	540
300	672	315	357	1280	2250	1801	663	1138	2158	303.3	1145	857.5	680	960	517.5	805	890
350	735	350	485	1350	2570	2082	819	1263	2567	333.34	1229	941.5	750	1100	566.5	854	1000



www.originaldomevalve.com

This leaflet is for guidance only. It does not form part of any contract and is subject to change without notice.