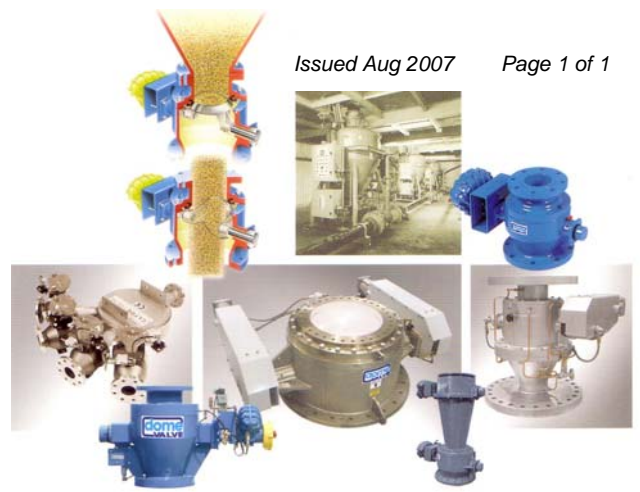




Data Sheet For:
Terminal Box



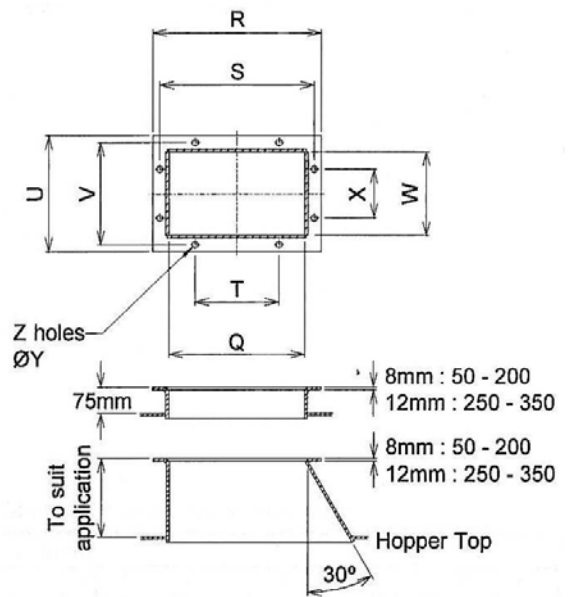
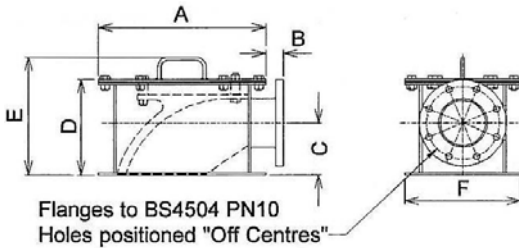
Terminal Box

The Terminal Box is employed as a delivery pipeline termination. It is used instead of a Dump Valve at the end of a line of series fed reception points and on systems with only one reception point.

The Terminal Box has a much lower profile than a long radius bend termination. It therefore achieves tangential entry of material into the reception hopper. Material is deflected through 90° by a deflector plate which is readily accessible for inspection or replacement. On any size of pipeline, Terminal Boxes and Dump Valves are completely interchangeable.

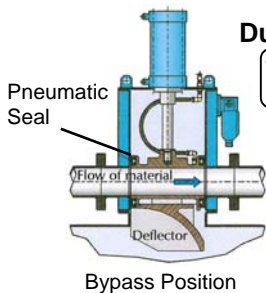
Mounting Flange Details

Fabricated Mounting Flanges are used to secure Dump Valves and Terminal Boxes to intermediate/termination points and are available in a number of sizes.



Dimensions – (mm)							
Size	A	B	C	D	E	F	KG
50	310	30	100	188	253	230	25
80	370	40	123	214	279	290	45
100	370	40	110	214	279	290	45
125	483	50	150	277	342	333	80
150	710	48	210	361	417	440	145
175	710	48	220	361	417	440	160
200	768	44	230	410	456	488	190
250	934	173	290	545	635	604	500
300	960	160	315	570	660	680	800
350	1104	198	350	629	719	754	950

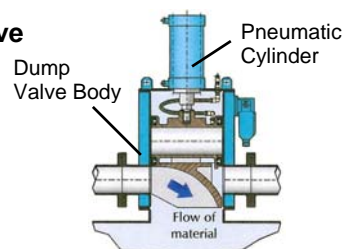
Dimensions – (mm)										
Size	Q	R	S	T	U	V	W	X	ØY	Z
50	230	310	280	160	230	200	150	120	18	8
80	288	370	340	170	290	260	208	130	18	8
100	288	370	340	170	290	260	208	130	18	8
125	390	483	442	240	333	293	240	140	18	8
150	558	710	670	320	440	400	308	230	18	8
175	558	710	670	320	440	400	308	230	18	8
200	608	770	720	360	490	440	328	250	18	8
250	780	934	870	435	604	540	440	180	22	14
300	780	960	876	438	680	596	500	200	22	14
350	910	1100	1030	206	750	680	550	170	22	18



Bypass Position

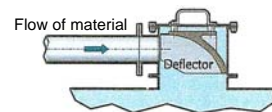
Dump Valve

(See separate Dump Valve Data Sheet)



Dump Position

Terminal Box



www.originaldomevalve.com